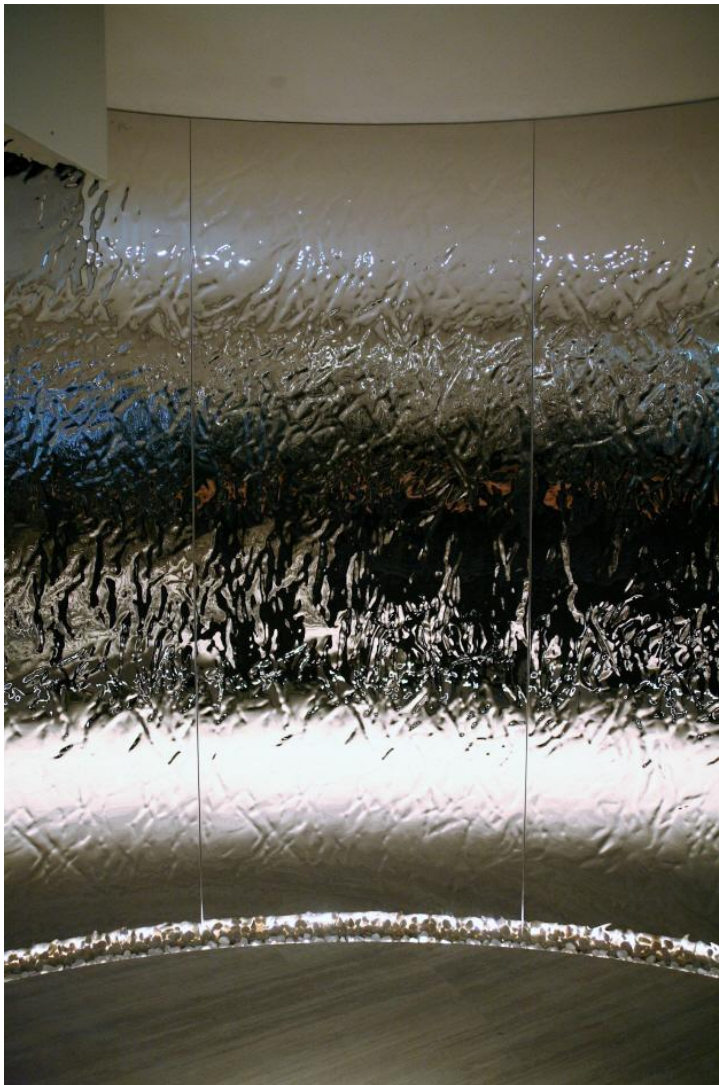


## **Installation Manual of Water Ripple Stainless Steel Panel**

**For interior wall cladding**

**BWT water ripple stainless products are also used for wall claddings, cladding of movable walls, column claddings, as wall decorations.**



**For interior wall claddings can be glued, also water ripple stainless steel panel is fixed on the wall with steel frames or wood frames.**



**Wood frame**



**Steel frame**





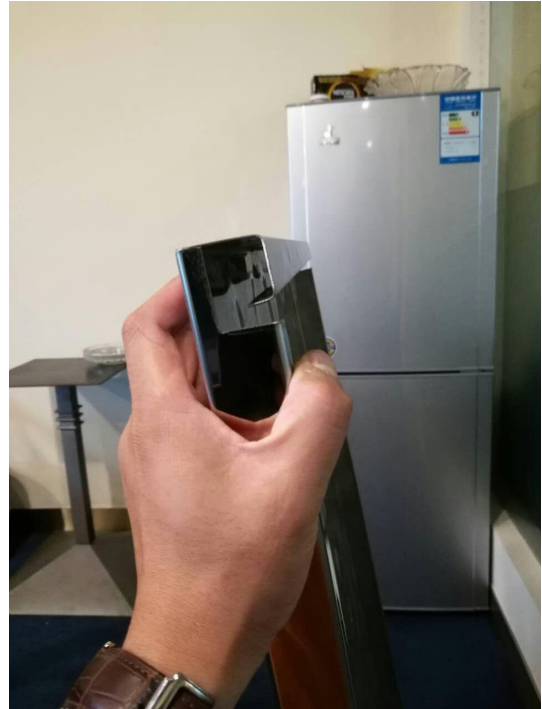


**Occasionally, glued panels are additionally secured by means of suspensions or screw connections.**

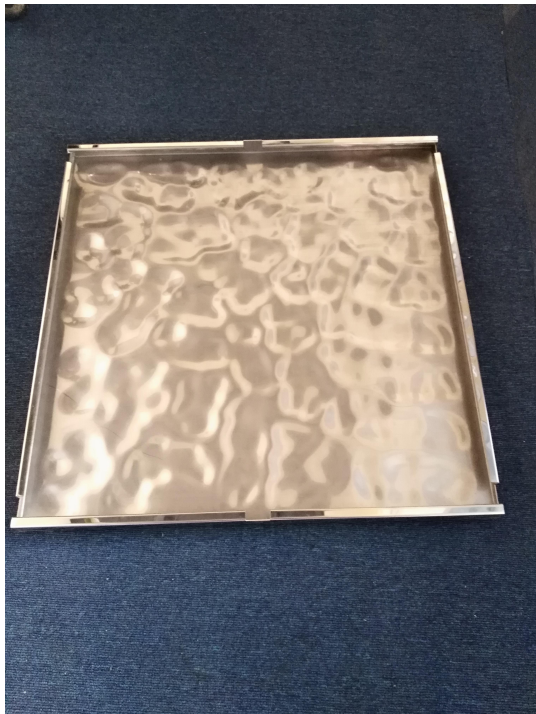


**For ceiling**

**The water ripple stainless steel should be bent to panels.**



**Bent edges for panel**



**Panel back side**



**Panel front side**





**Ripple panel back side, with 6\*20mm holes can be fixed on steel frames with screws**



**Ripple panel ready for installation**

**Ceiling with water ripple stainless steel panels**

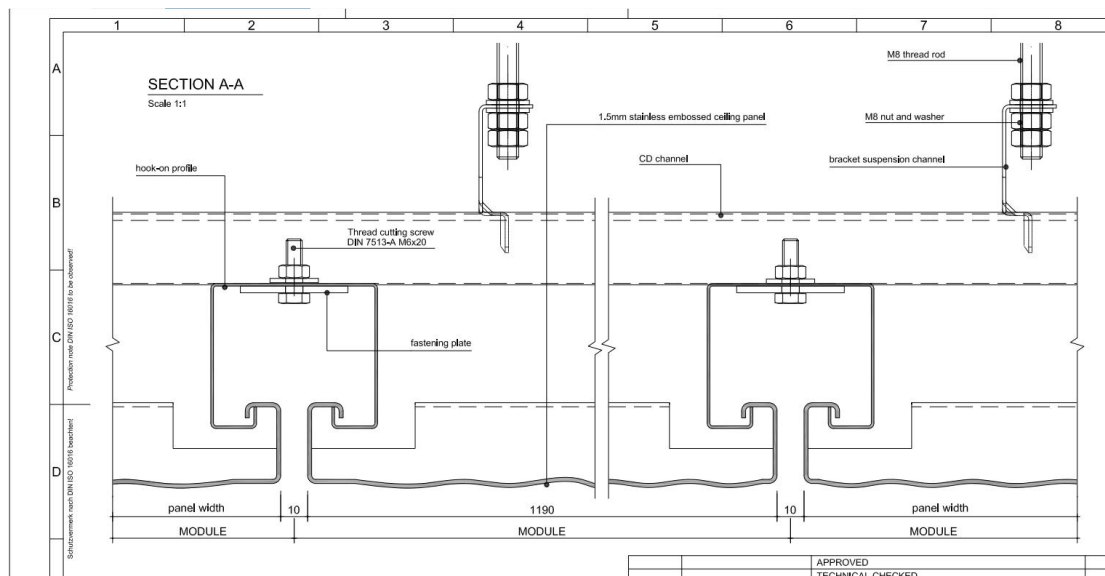
**For ceiling works, we need to establish the steel frame on the ceiling firstly.**



**Steel frame on the ceiling**

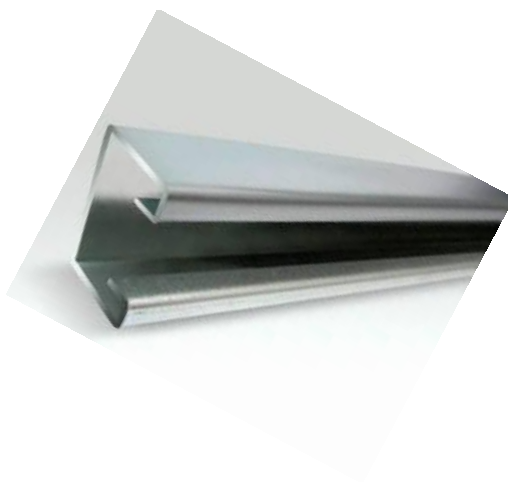






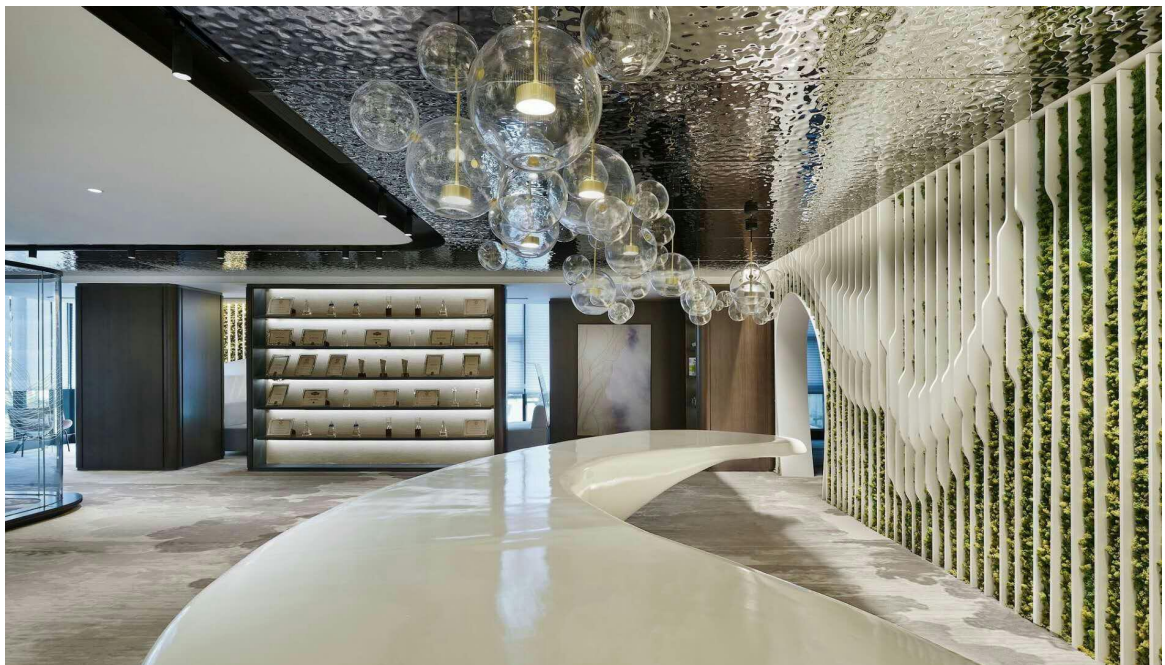
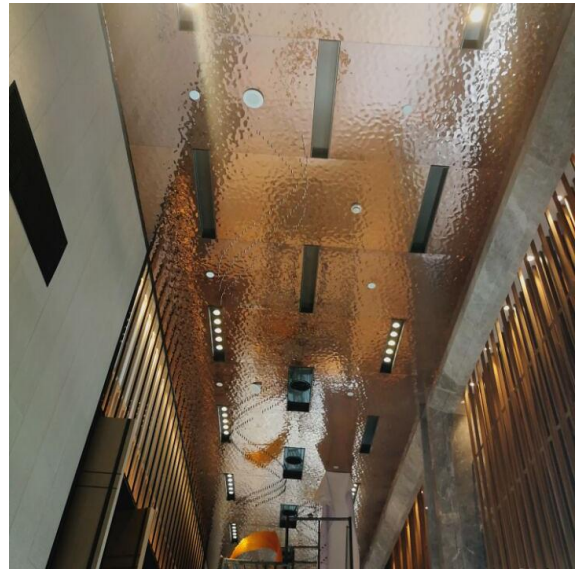
**Drawing for ceiling installation with water ripple stainless steel panels**

**Firstly make holes on the steel channel, and fix steel channels on the ceiling with screws.**



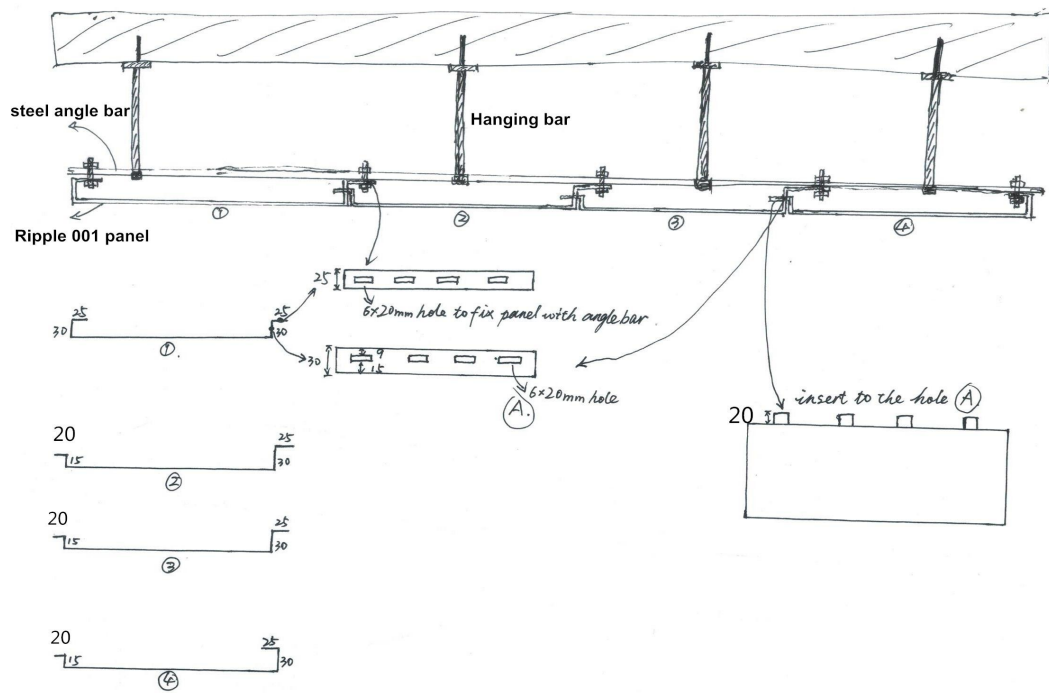
**Steel C channel**

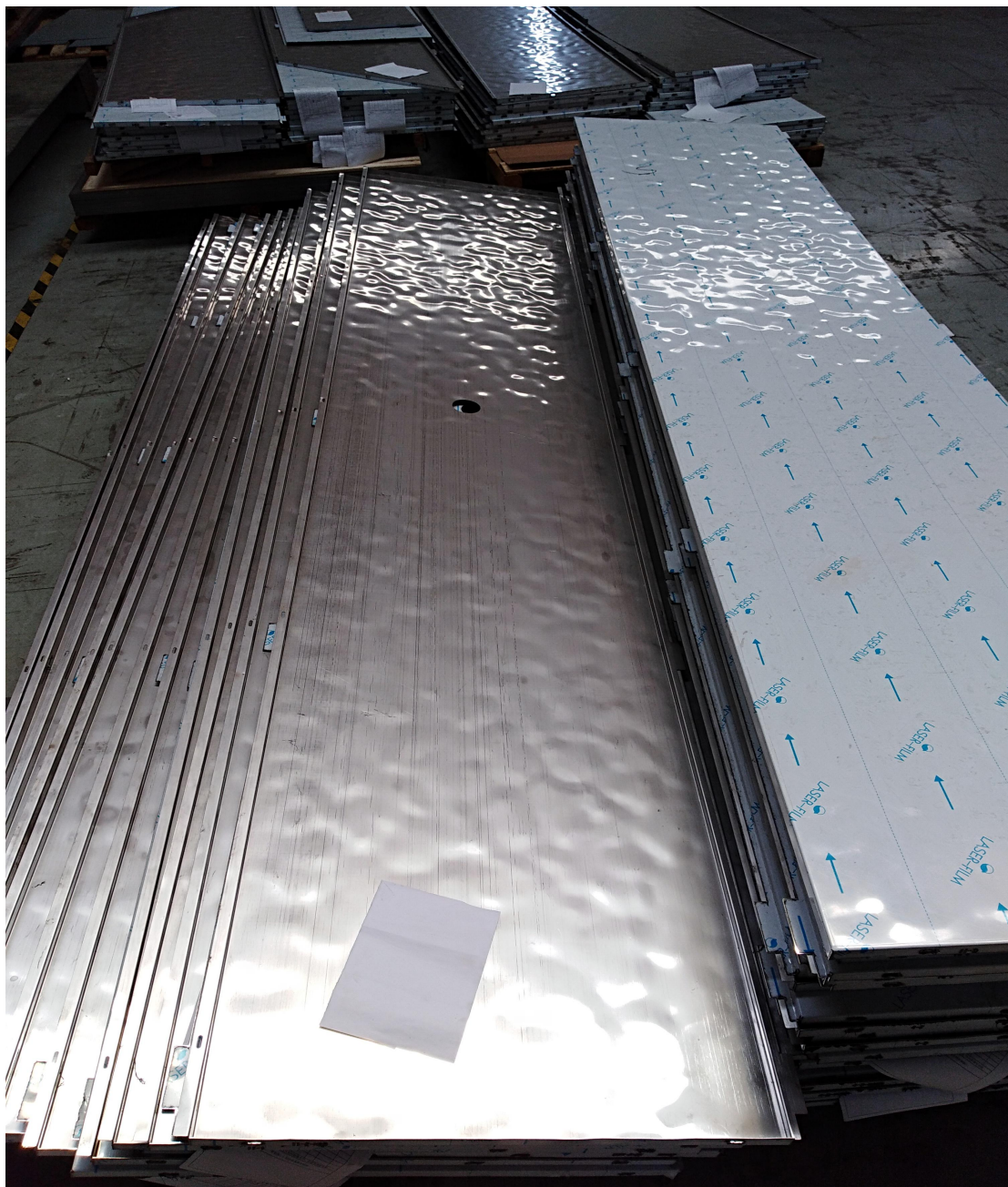
**Then hang the water ripple stainless steel panels on the steel channels. And fix the panels with screws to enhance the fixedness.**



**Inserting type ceiling panels:**





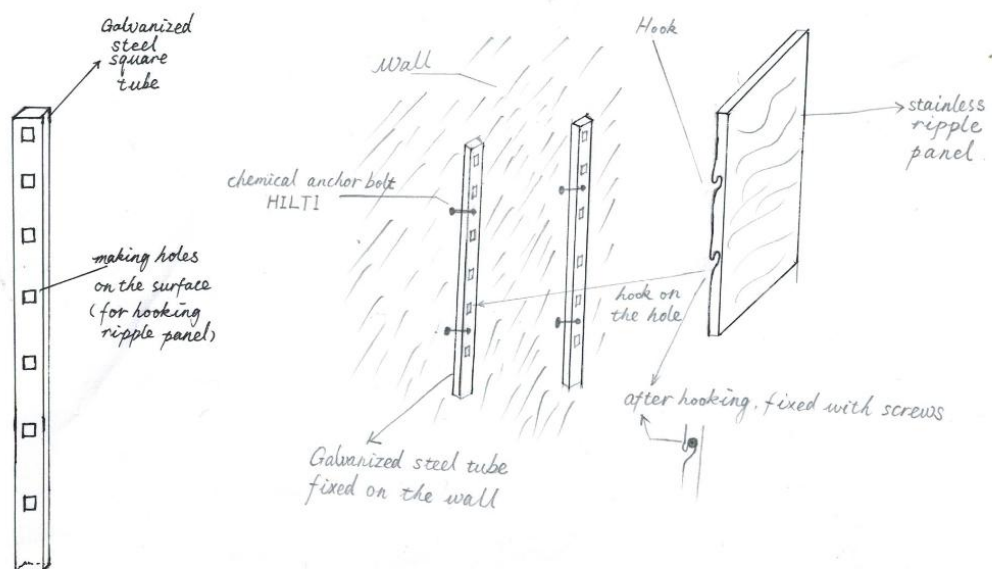






## Exterior wall cladding

### Installation method 1.

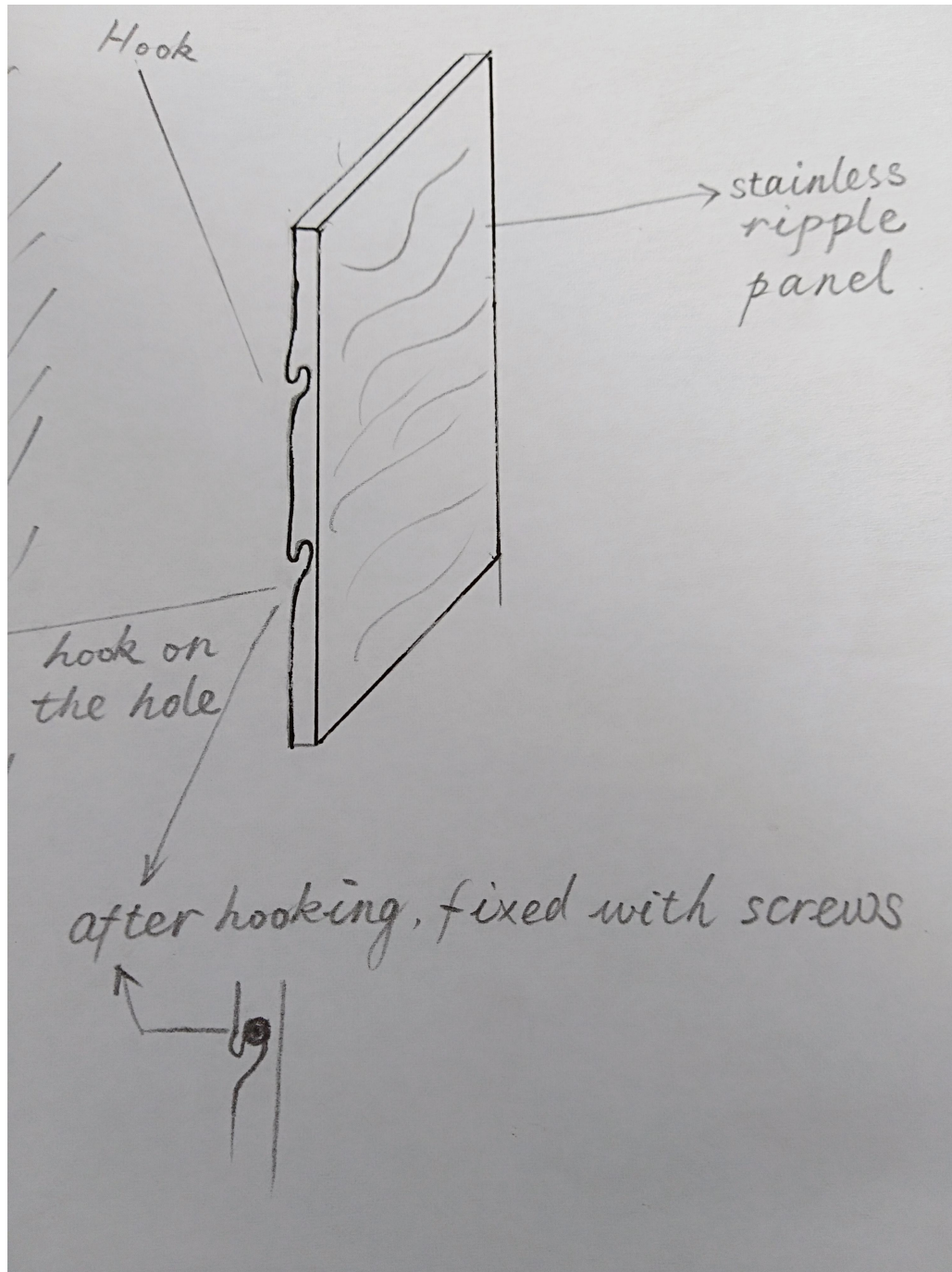


### Drawing of installation method 1.

Firstly, make the holes on the galvanized steel square tubes by laser cutting machine, and

these holes will be used for hooking the water ripple stainless steel panels. Then fix these galvanized tubes on the wall with chemical anchor bolt (HILTI).

For the water ripple stainless steel panels, we should cut hooks on the bent edges by laser cutting machine. Please see the below drawing.

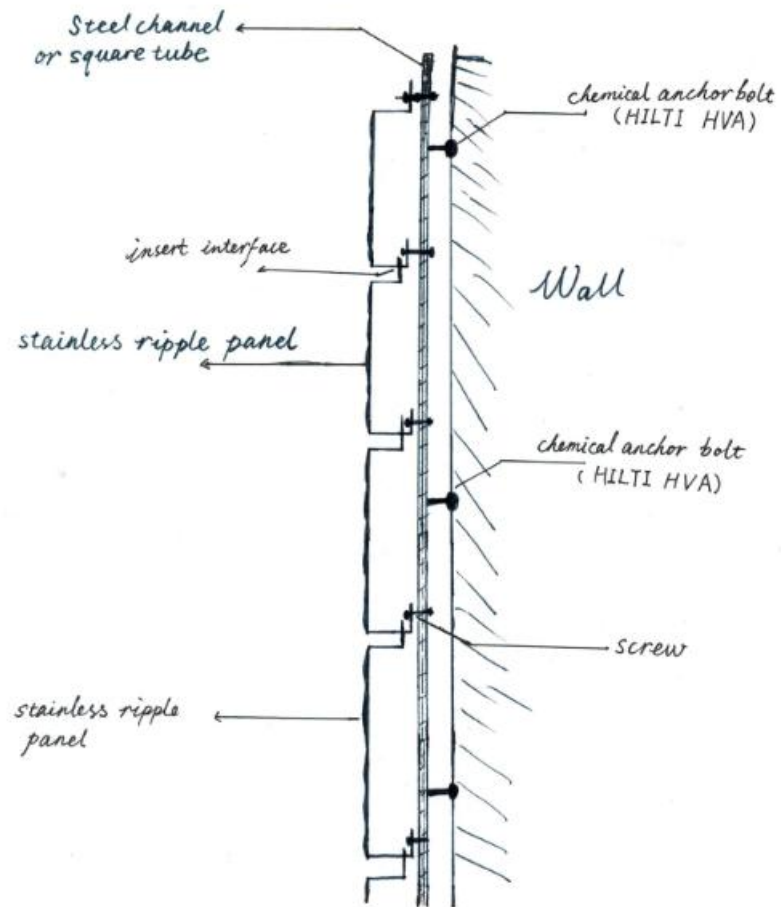




**Wall cladding work.**

**Installation method 2.**





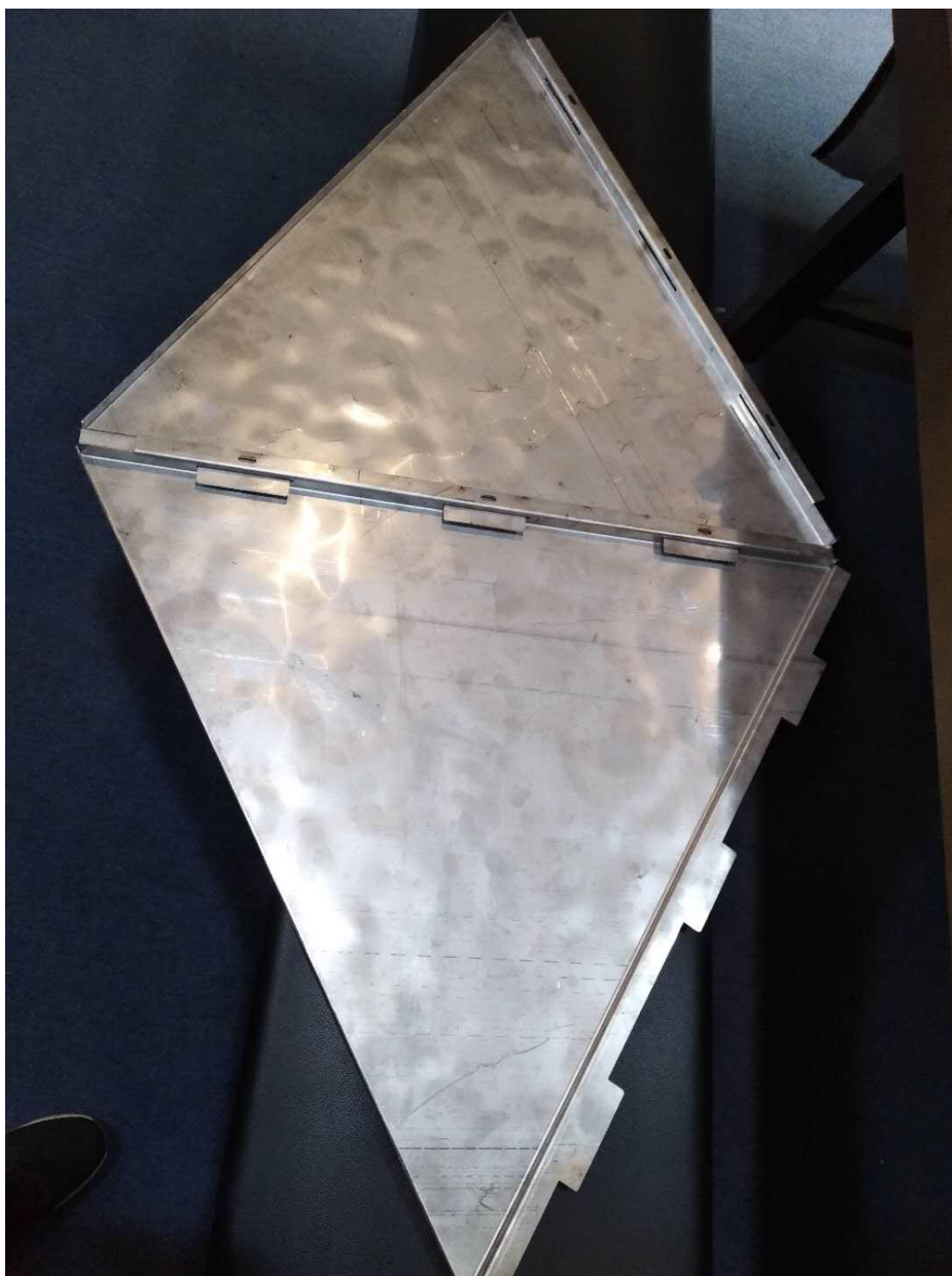
Drawing of installation 2.



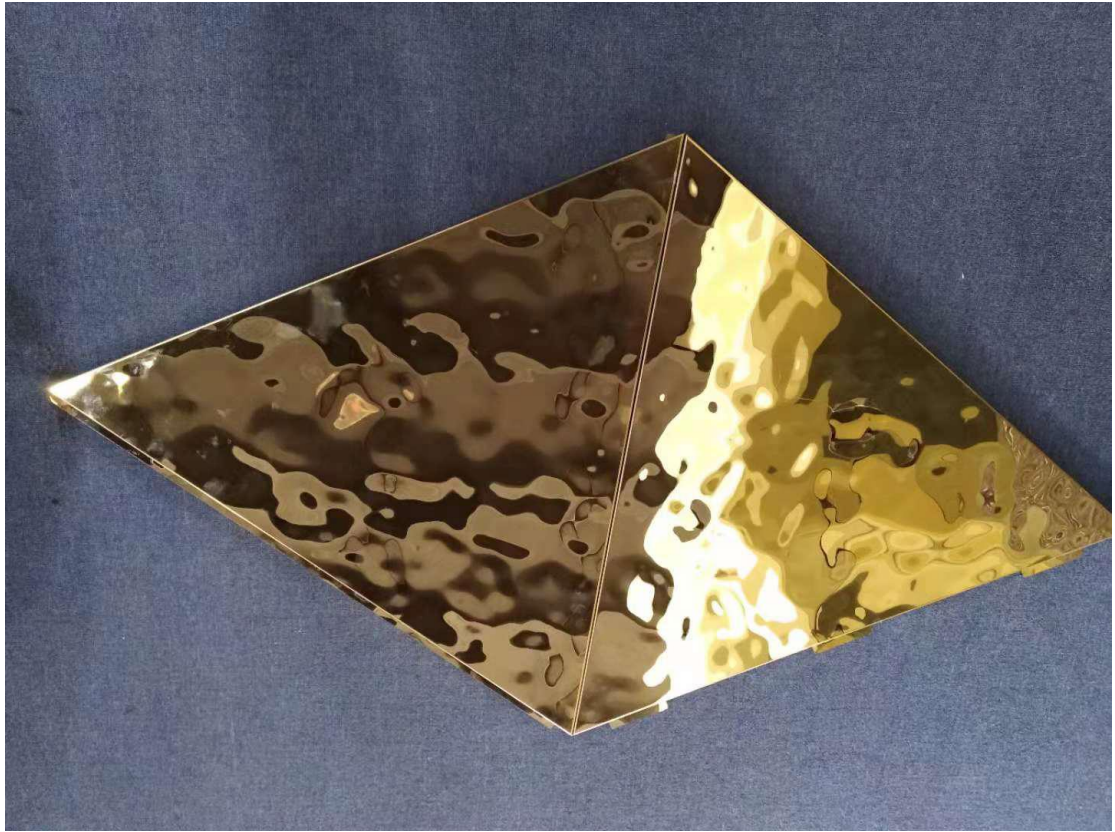
Pre-cut hole for inserting work  
picture )



Inserting part( to insert in the hole of left  
picture )











For the installation, firstly fabricate the water ripple stainless steel sheets to panels, but make some inserting part at one end of the panel, and cut some holes at the other end of the panel, so when install on the wall, one panel can insert its one end to another panel. Please see the drawing. And one end the panels are fixed to the steel frame with screws.

The water ripple stainless steel panels are not fixed to the concrete wall directly, but fixed on the steel square tubes which are fixed on the wall with chemical anchor bolt(HILTI), same like the installation method 1.